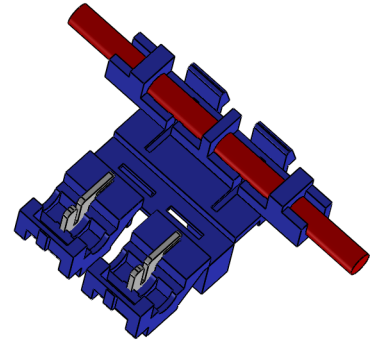


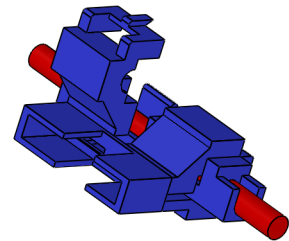
Notes:
 Suited for cable 0,75 - 1,5mm²
 Max. cable insulation ϕ 3,5mm
 Max. 20A fuse

APPLICATION INSTRUCTIONS

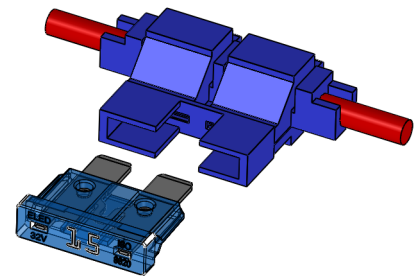
1. cut wire, but do not strip insulation
2. insert cable end up to stop



3. close connector half, crimp with suitable pliers



4. repeat for other side
5. ready to install fuse, max.20A



A Housing PA66 blue
 B Contact Sn plated CU alloy

ELED ref.	Description
H1972	NORM fuse holder

UNLESS OTHERWISE SPECIFIED: DIMENSIONS ARE IN MILLIMETERS SURFACE FINISH: TOLERANCES: 0,2 LINEAR: ANGULAR:	FINISH:	DEBUR AND BREAK SHARP EDGES
---	---------	-----------------------------------

DO NOT SCALE DRAWING

REVISION

ELED

	NAME	SIGNATURE	DATE		
DRAWN	B.D.		12.2014		
CHK'D					
APPV'D					
MFG					
Q.A				MATERIAL:	
				WEIGHT:	

TITLE:	NORM fuse holder	
DWG NO.	H1972	A4
SCALE:1:1	SHEET 1 OF 1	